

QUICK REFERENCE



KLIK plus

SEAT AND BASE MODEL CF05702
BASE ONLY IF05702

This Child Restraint is suitable for children up to approximately 12 months of age.

IMPORTANT: After reading this Quick Reference read the Instruction Booklet carefully

IMG-0117C

INSTALLATION - DO THIS FIRST

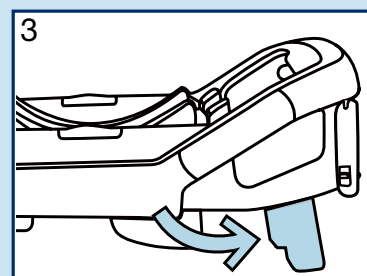
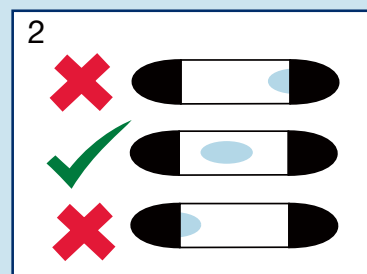
IMPORTANT: This is a rear facing child restraint. Do not face forward.



1. The car must be level.
See page 7

2. The bubble must be between the black lines.
See page 8

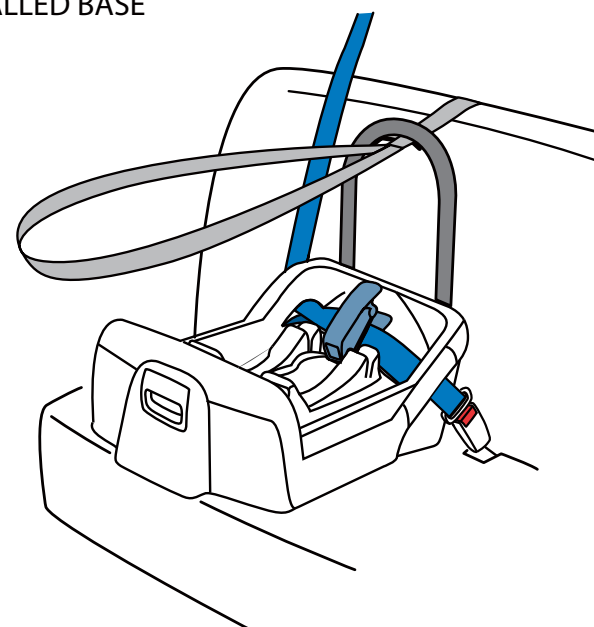
3. Raise the front of the base by swinging out the recline foot.
If the recline adjustment foot does not give sufficient recline, add a folded towel or similar.
See page 8



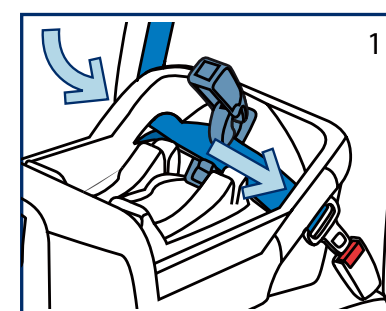
INSTALLATION - USING VEHICLE BELTS

Page numbers refer to the INSTALLATION Booklet

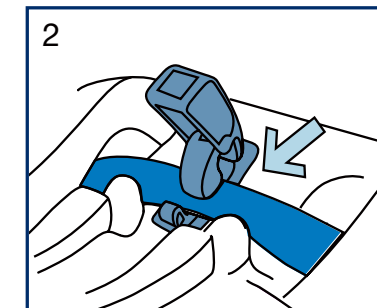
INSTALLED BASE



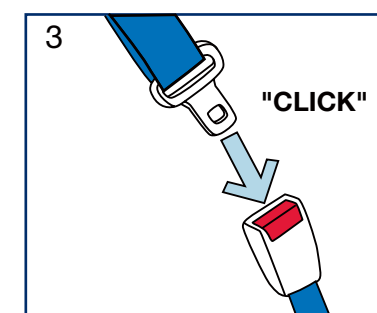
1. Place the base on the vehicle seat and pass the vehicle belt through the openings in the base labeled BELT PATH.
See page 9



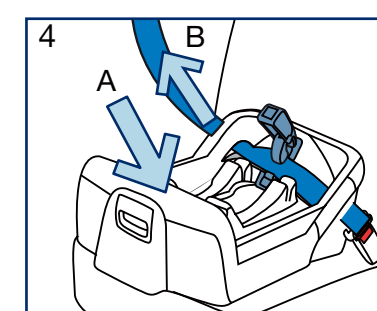
2. Open the belt lockoff and place vehicle belts across it.



3. Buckle the vehicle belt.



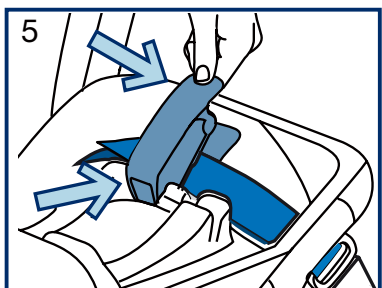
4. Push the base into the vehicle seat firmly A and pull the vehicle belts TIGHT B.



CONTINUED BELOW

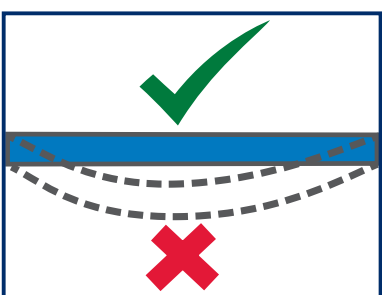
INSTALLATION - USING VEHICLE BELTS

5. Hold vehicle belts tight and engage the belt lock off.
See page 10



Check

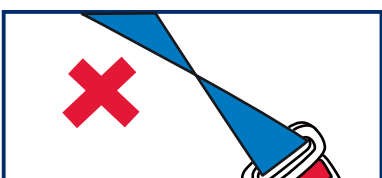
Is vehicle belt lockoff holding belt firmly?



Is vehicle belt is tight?



Is vehicle belt twisted?



Is vehicle buckle engaged?



Is recline level still correct?



UNDERSTANDING ISOFIX

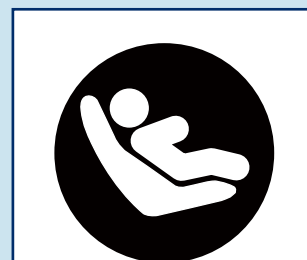
Some vehicles are fitted with ISOFIX low anchorage points.

These are found at the bottom of the back seat backrest.



This child restraint has connectors to attach to them.

If the ISOFIX low anchorage points are not clearly visible the vehicle seat will be marked with labels to show their location.

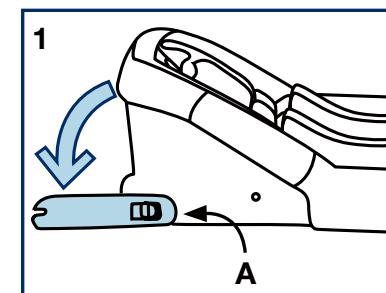


ISOFIX
Typical marking showing location of ISOFIX low anchorage points.

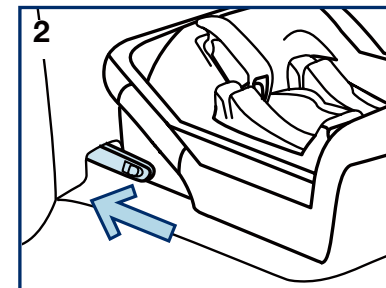
If in doubt that the vehicle is fitted with such points check the Vehicle Owners Manual.

INSTALLATION - USING ISOFIX CONNECTORS

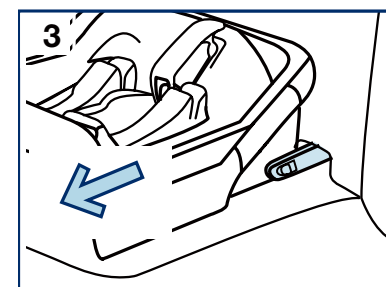
1 Press the release buttons A and swing the ISOFIX connectors forward to their operating position.
See page 15



2 Attach each connector to the vehicle ISOFIX anchorages.
See page 15

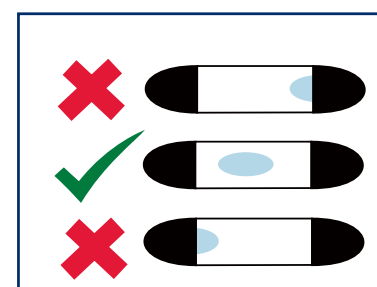


3 Pull the base back to ensure both lower connectors are engaged.
See page 15



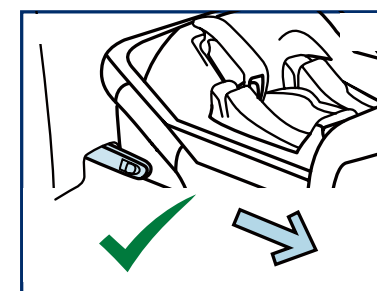
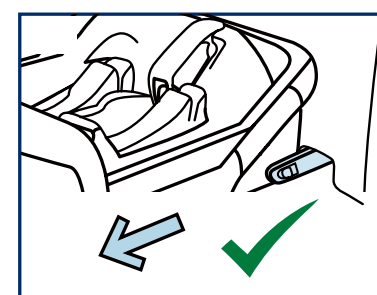
Check

Bubble level indicator - is recline level still correct?



Adjust if necessary.

Are both sides of base latched securely? Pull back hard to check.



TETHER STRAP - GENERAL



Always use the tether strap.

Connect the tether strap to the built-in anchor fitting in the vehicle, or if there is not one available, install the anchor fitting supplied with this restraint.

When the restraint is in a vehicle always fit the tether into the guide at the back.

See page 20

TETHER STRAP - USE

Always connect the snap hook securely to the anchorage fitting.

See page 21

Straps must not be twisted.

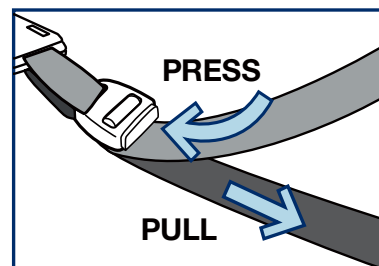
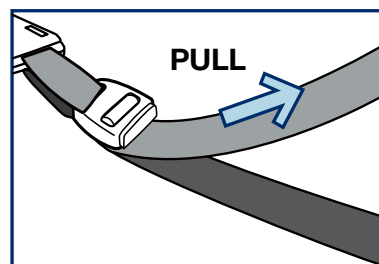
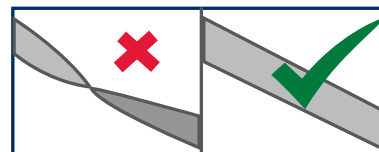
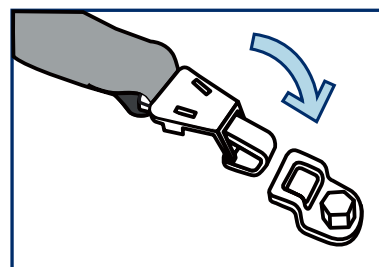
See page 21

To increase webbing tension pull upper strap through adjuster.

See page 21

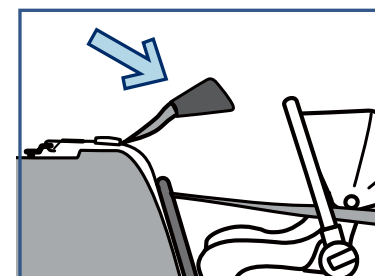
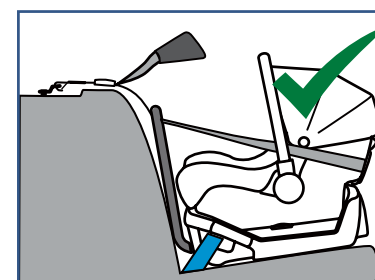
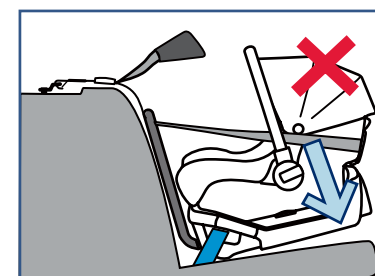
To release webbing tension press adjuster button and pull lower strap.

See page 21



Do not adjust so tight that it lifts the child restraint off the vehicle seat.

See page 22



Store unused web in bag on end of tether.

See page 22

SHOULDER HEIGHT LEVEL LABEL

Use this label to know when your child is too big for the restraint. Once your child's shoulders reach the dotted line, it is time to move to a bigger restraint.

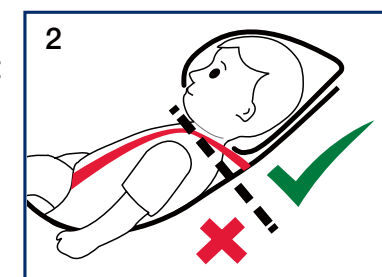
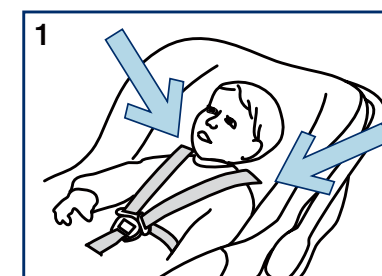
See USE Instructions page 19.



Correct positioning of the shoulder straps is essential for your baby's safety.

Requirement:

The shoulder strap slots must be in the first adjustment position above the child's shoulders, and not lower than the child's shoulders.



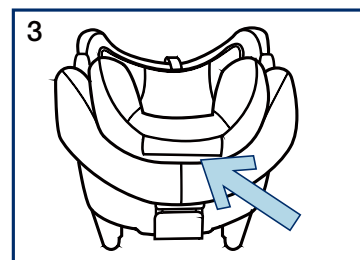
USE Page numbers refer to the USE Booklet

First check shoulder strap height and adjust if necessary.

Adjust shoulder height

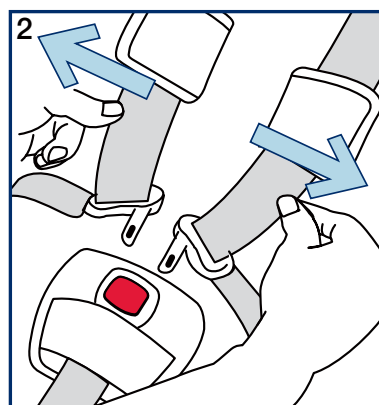
3 The shoulder straps move with the headrest. Adjust the headrest height by squeezing the release lever at the back of the headrest and raising or lowering it as required.

See page 7



2 Press button to open the buckle. Spread harness straps apart.

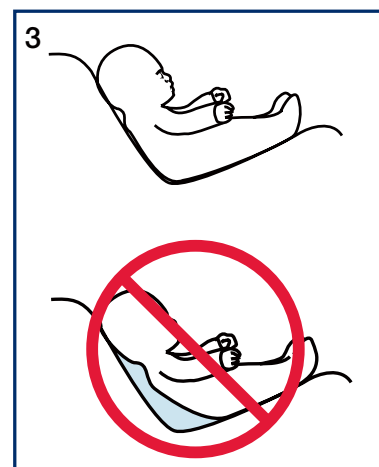
See page 10



3 Place child in restraint in seated position.

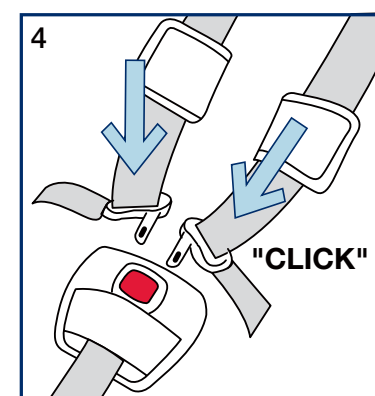
Child's back must be firmly against both the back and bottom of the restraint.

See page 10



4 Place buckle tongues into the buckle. IMPORTANT: Both buckle tongues should "CLICK" into place.

See page 11



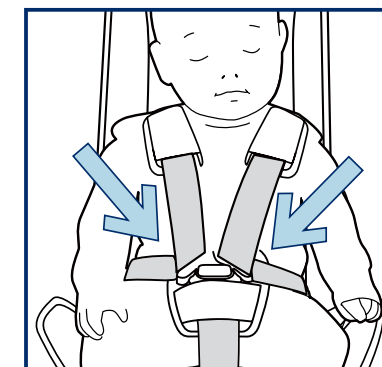
5 Tighten harness by pulling on the adjuster strap at the front of the restraint. HINT: pull the shoulder straps up with one hand while pulling on the adjuster strap with the other.

See page 11

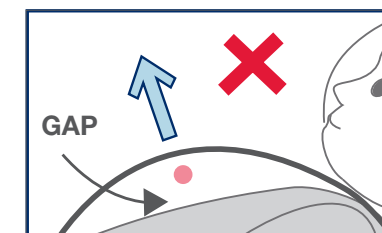


Check

Is harness snug around child's waist and shoulders?



Is harness too loose? Put finger under strap and pull out.



Are shoulder straps twisted?

