

IMPORTANT!
KEEP THESE
INSTRUCTIONS FOR
FUTURE REFERENCE!
READ CAREFULLY

Designed
around your life



Contents

Product Information	4
Warranty	
Contact	
Child Usage Requirements	5
Warnings	6
Parts List	9
Product Set Up	10
Product Use	12
Accessory	18
Cleaning and Maintenance	20

Product Information

Model Number: _____

Manufactured Date: _____

Warranty

Our goods come with guarantees that cannot be excluded under the Australian Consumer Law. You are entitled to a replacement or refund for a major failure and compensation for any other reasonably foreseeable loss or damage. You are also entitled to have the goods repaired or replaced if the goods fail to be of acceptable quality and the failure does not amount to a major failure.

We have purposely designed our high-quality products so that they can grow with both your child and your family. Because we stand by our product, our gear is covered by a custom warranty per product, starting from the day it was purchased. Please have the proof of purchase, model number and manufactured date available when you contact us.

For warranty information please visit:
www.nunababy.com/warranty

Contact

For replacement parts, service, or additional warranty questions, please contact our customer service department.

Distributed by Nuna Baby Australia Pty Ltd

ACN: 642 240 140

Unit 1, 35 Lyn Parade Prestons,
NSW Australia 2170

For after-sales & warranty service,
contact: 1800 951 070
customerservice@nunababy.com.au

Child Usage Requirements

This travel cot is suitable for use with children who meet the following requirements:

Child: from birth

Weight: up to 9kg for bassinet mode/ up to 15kg for cot

Height: up to 86cm for cot/ playpen

Discontinue using bassinet when child begins to push up on hands and knees or has reached 9kg.

Discontinue using travel cot when child reaches 15 kg or is able to climb out.

WARNING

Read carefully and keep this manual for future reference. Failure to follow these instructions and warnings could result in serious injury or death.

Be sure the product is completely setup before use. Keep children away while assembling/ disassembling the product.

Check the assembly of the folding cot is correct and safe.

Ensure The Top Rails And Base Are Fully Locked. Check the locking devices are fully engaged.

Always use on a flat, level floor.

Do not add a second mattress.

USE ONLY THE MATTRESS SUPPLIED BY THE MANUFACTURER, INCORRECT MATTRESS CAN CAUSE DEATH.

Use Only Accessories As Recommended By The Supplier.

Check this product regularly before using it, and do not use it if any part is loose, broken, torn or missing or if there are any signs of damage.

Do not substitute parts. Contact the Nuna Baby if replacement parts or additional instructions are needed.

Place infant on their back when using this product.

Infants should be placed on a firm, flat surface to sleep.

Carry out the assembly of the folding cot in a particular order.

Secure, tighten and maintain all fastening devices.

THIS BASSINET SHOULD BE REMOVED BEFORE THE CHILD CAN SIT UP.

Do not put objects or accessories in an infant's sleep environment.

Do not place this product near a blind, cord, strap or similar item that could become wrapped around an infant's neck.

Do not use this product near naked heat sources, bar heaters, open fires or exposed flames.

Do not leave anything on the product (such as toys) that provide a foothold.

Keep this product clear of trailing cables and hanging cords.

Keep medication and small items that a child could choke on, away from the cot.

Folding cots with padded rims should be not be used if the covering material has been bitten through.

To avoid suffocation, remove plastic bag and packaging materials before using this product. The plastic bag and packaging materials should then be kept away from babies and children.

BASSINET: Do not use this product when the infant begins to push up on hand and knees or has reached (9kg), whichever comes first. Use with only one child at a time.

TO PREVENT FALLS, THE BASSINET MUST NOT BE USED ONCE A CHILD CAN SIT UP.

COT: NEVER PLACE A CHILD IN THE COT WHEN THE BASSINET IS IN PLACE. Remove the bassinet before using the cot.

PLAYPEN: Remove the bassinet before using the playpen. Never leave your child unattended in the playpen. Always keep your child in view.

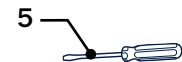
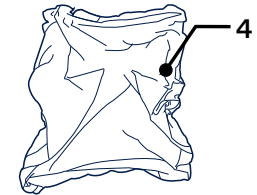
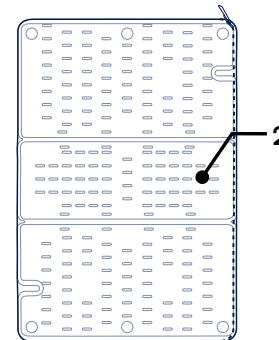
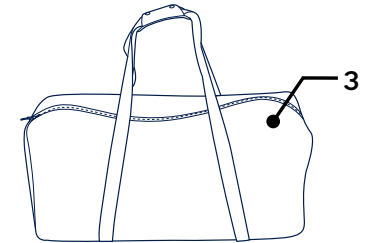
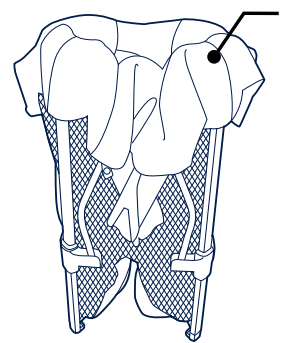
INCORRECT MATTRESS CAN CAUSE DEATH.

Size of the mattress: 935mm x 625mm x 33mm.

Parts List

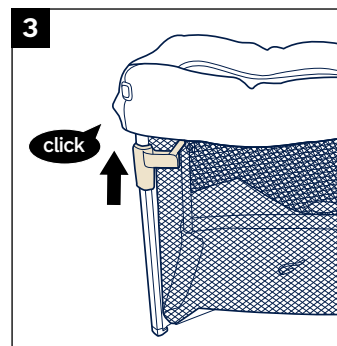
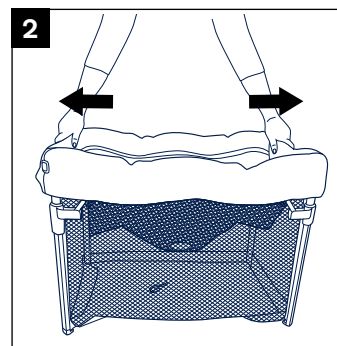
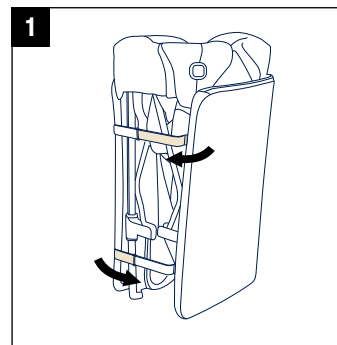
Make sure all parts are available before assembly. If any part is missing, please contact Nuna (see page 5 for information). No tools are required for assembly.

- | | | | |
|---|---------------------|---|--|
| 1 | Travel Cot/Bassinet | 4 | Sheet |
| 2 | Mattress | 5 | Flathead Screwdriver
(Not Included) |
| 3 | Storage Bag | | |



Product Set Up

- 1** - To open the travel cot frame, unfasten hook and loop straps from the mattress and unfold.
 - 2** - Pull the sides of the travel cot frame outward.
 - 3** - Slide the slider under the folding release button upwards. A “click” sound means the travel cot frame is open.
- !** Check that the travel cot frame is completely latched open before continuing.
- !** Take care and pay attention when setting up the travel cot to prevent injury.



Product Use

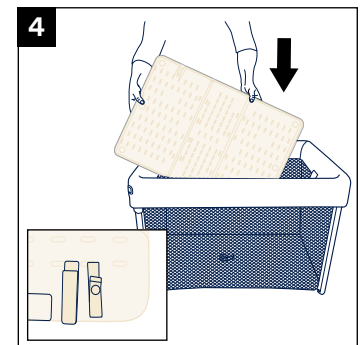
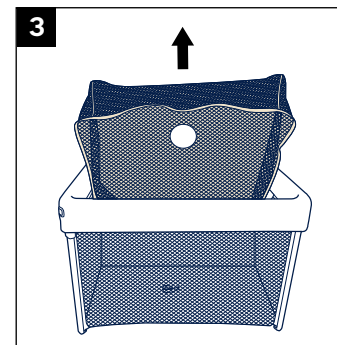
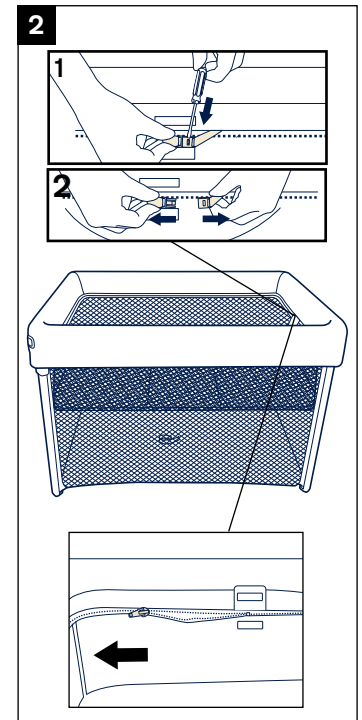
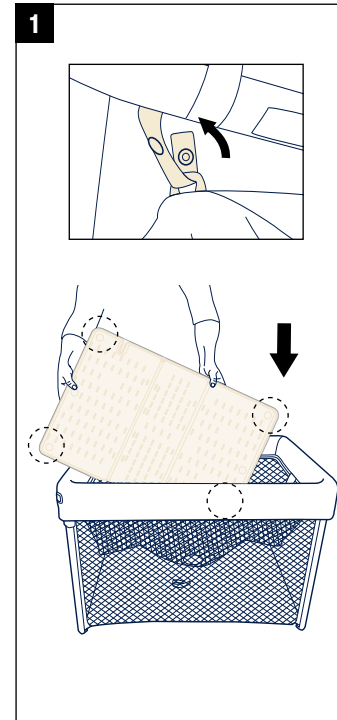
Bassinet Mode

- 1 - Install mattress soft side up. Attach the mattress by feeding the straps on the mattress corners through the loop in the bottom of the bassinet and fasten the snap. Bassinet set up is complete.
 - ! When place the mattress inside the bassinet, soft side facing up.
 - ! Push down on all four sides and corners of the mattress to ensure it is secured to the bottom of bassinet.

Travel Cot/Playpen Mode

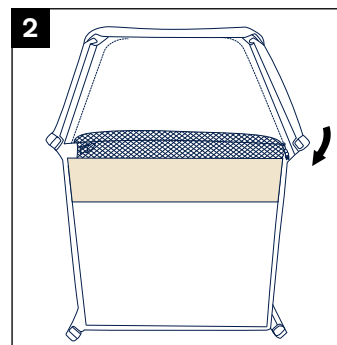
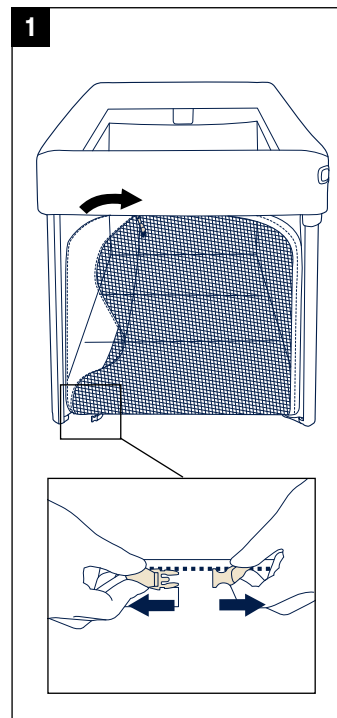
Remove the mattress from the bassinet.

- 2 - Release the zipper buckle inside the bassinet and unzip the bassinet.
 - ! Flathead screwdriver is required for releasing zipper buckle. (This product does not included a flathead screwdriver)
- 3 - Remove the bassinet from the travel cot.
- 4 - Place the mattress on the bottom of the travel cot.
 - ! When place the mattress inside the travel cot, soft side facing up.
 - Push down on all four corners of the mattress to ensure the mattress is secured to the bottom of the travel cot.
 - ! Take care and pay attention when removing the bassinet to prevent injury.



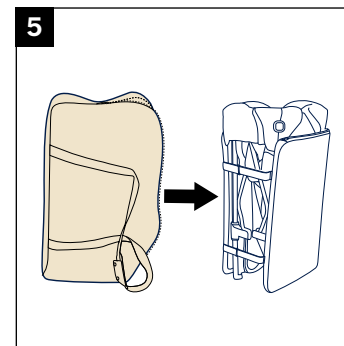
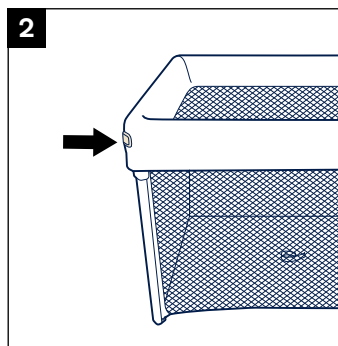
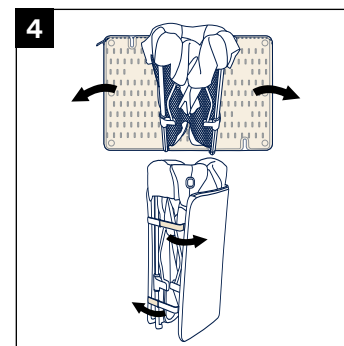
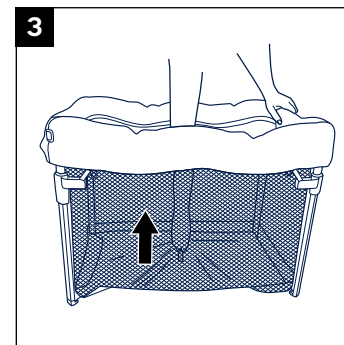
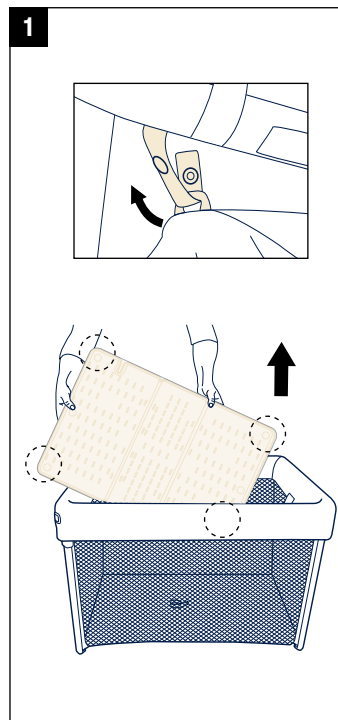
Free Play Mode

- 1** - Release the zipper buckle under the travel cot to be convenient for babies to enter and exit.
! When using the bassinet mode and travel cot mode, the zipper buckle can not be opened.
- 2** - The mesh can be stored in the bottom pocket of the travel cot.



Fold

- 1** - Remove mattress from the travel cot.
- 2** - Press folding release button.
- 3** - Grab strap on bottom of travel cot and pull up. Then push sides together towards the center. Do not force.
- 4** - Wrap the unit with the mattress (soft side of the mattress facing outside), guide the hook and loop straps through the rings and attach them.
- 5** - Store the travel cot in the storage bag and zip it up.
 - !** Take care and pay attention when folding the travel cot to prevent injury.



Accessory

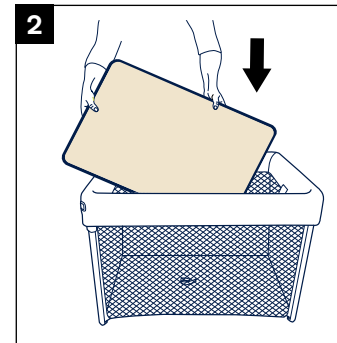
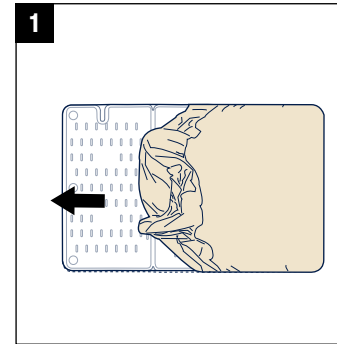
Attaching the Sheet

WARNING

Prevent possible suffocation or entanglement.
NEVER use travel cot sheet unless it fits securely
on travel cot mattress.

Sheet

- 1 - Wrap the sheet around the mattress on all four corners.
MAKE SURE sheet is securely attached to the four corners.
- 2 - Once the sheet is attached place the mattress inside the travel cot. **MAKE SURE** that the hook and loop patches on the sheet are securely attached.



Cleaning and Maintenance

Your travel cot can be spot cleaned with a sponge and mild soapy water. The covering material is not removable.

DO NOT soak.

DO NOT use bleach or harsh detergents.

The travel cot must be thoroughly dried before using or storing – Avoid exposure to heat and sunlight.

Your storage bag can be washed in lukewarm water using mild household soap and then drip-dry.

DO NOT USE BLEACH.

To wash your mattress, you will need to remove your boards by unfastening the zipper and pulling the boards out.

ALWAYS fasten the zipper on the mattress before washing. Your mattress can be washed in lukewarm water using mild household soap and then drip-dry.

! **NEVER** use the mattress without the boards installed. Once boards are installed in their correct slots, refasten the zipper.

! **ONLY** use the mattress with the board in place.

