

**IMPORTANT-READ  
CAREFULLY AND  
KEEP FOR FUTURE  
REFERENCE.**

*Designed*  
**around your life**

## **Contents**

<b>Product Information</b>	<b>3</b>
Warranty	
Contact	
<b>Child Usage Requirements</b>	<b>4</b>
<b>Warning</b>	<b>5</b>
<b>Parts List</b>	<b>10</b>
<b>Product Set Up</b>	<b>11</b>
<b>Product Use</b>	<b>15</b>
<b>Cleaning and Maintenance</b>	<b>21</b>



## Product Information

**Model Number:** \_\_\_\_\_

**Manufactured Date:** \_\_\_\_\_

The model number and the manufactured date are located on a label on the mattress board inside the bassinet, under the soft goods.

### Warranty

Our goods come with guarantees that cannot be excluded under the Australian Consumer Law. You are entitled to a replacement or refund for a major failure and compensation for any other reasonably foreseeable loss or damage. You are also entitled to have the goods repaired or replaced if the goods fail to be of acceptable quality and the failure does not amount to a major failure.

We have purposely designed our high-quality products so that they can grow with both your child and your family. Because we stand by our product, our gear is covered by a custom warranty per product, starting from the day it was purchased. Please have the proof of purchase, model number and manufactured in date available when you contact us.

**For warranty information please visit:**  
[www.nunababy.com](http://www.nunababy.com)

## Contact

**Distributed by Nuna Baby Australia Pty Ltd**

ACN: 642 240 140

Unit 1, 35 Lyn Parade Prestons, NSW Australia 2170

**For after-sales & warranty service, contact:**

1800 951 070

[customerservice@nunababy.com.au](mailto:customerservice@nunababy.com.au)

**NUNA International B.V.**

Van der Valk Boumanweg 178 C

2352JD Leiderdorp

The Netherlands

## Child Usage Requirements

This bassinet is suitable for use with children who meet the following requirements:

**Weight:** Up to 9 kg (20 lb) (birth–6 months)

**Height:** 68 cm (27 in.) or less

STOP using the bassinet when the infant begins to push up on hands and knees.

## **⚠️ WARNING**

Failure to follow these warnings and the instructions could result in death or serious injury.

# **SUFFOCATION HAZARD**

## **Babies have suffocated:**

- On pillows, comforters, and extra padding.
- In gaps between a wrong size mattress, or extra padding and bassinet sides.
- **NEVER** add soft bedding or padding.
- Use **ONLY** mattress provided by Nuna.
- Always place baby on back to sleep to reduce the risk of SIDS and suffocation.

- If a sheet is used with the pad, use only the one provided by Nuna or one specifically designed to fit the dimension of the bassinet mattress.

- Bassinet can roll over on soft surfaces and suffocate child. **NEVER** place bassinet on beds, sofas, or other soft surfaces.

**FALL HAZARD:** To help prevent falls,

- Do not use this bassinet when the infant begins to push up on hands and knees, has reached 20 lb (9 kg), or whose height is more than 27 inches (68 cm), whichever comes first.
- Always check that the bassinet is securely locked onto the stroller/stand by pulling up on it.
- Only use bassinet on stroller. Never use on floor or an unintended elevated surface.
- Strings can cause strangulation! Do not place items with a string around a child's neck, such as hood strings or pacifier cords. Do not suspend strings over a bassinet or cradle or attach strings to toys.
- Do not use if any part of the bassinet is broken, torn, or missing.
- Child's movement can slide bassinet. **NEVER** place bassinet on counter tops, tables, or any other elevated surface. **ONLY** use bassinet on a Nuna DEMI next stroller. **DO NOT** use bassinet on floor/ground.

Any damage caused by the use of accessories not supplied by Nuna will not be covered in terms of warranty.

A child's safety is your responsibility.

Always provide the supervision necessary for the continued safety of your child. Never leave child unattended.

Be aware of the risk of open fire or other source of strong heat, such as electric bar fires, gas fires, etc., in the near vicinity of bassinet.

Before carrying or lifting, make sure that the handle is in the correct position of use.

Check that the attachment devices are correctly engaged before use.

Ensure that all the locking devices are engaged before use.

Keep small parts away from children as they pose a choking hazard.

Only use on a firm, horizontal, level and dry surface.

Overloading, incorrect folding, and the use of accessories e.g. child seats, bag hooks, rain covers, buggy boards, etc... other than those approved by Nuna may damage or make bassinet unsafe.

The bassinet is not suitable for running or skating.

The bassinet is only suitable for a child who cannot sit up unaided, roll over and cannot push itself up on its hands and knees. Maximum weight of the child: 9kg.

The handle and the bottom should be inspected regularly for signs of damage and wear.

The head of the child in the bassinet should never be lower than the body.

To avoid any danger of suffocation, remove all plastic covers before using this item and destroy or keep away from babies and children.

To avoid injury ensure that your child is kept away when unfolding and folding the bassinet.

**DO NOT** store the bassinet in a damp place.

Always allow the fabric to dry naturally away from direct heat.

**DO NOT** carry additional children, goods, accessories in or on the bassinet except as permitted in this leaflet. They may cause the bassinet to become unstable.

**DO NOT** use or add any mattress other than the one supplied with the bassinet by Nuna.

**DO NOT** add another mattress on top of the mattress provided or recommended by the manufacturers.

**DO NOT** let the child play with the bassinet.

**DO NOT** use the bassinet if any part of the bassinet is broken, torn or missing.

**DO NOT** let other children play unattended near the bassinet.

**DO NOT** place the bassinet near an open fire or other source of strong heat.

**NEVER** place the child with their head at the foot end of the bassinet.

**NEVER** leave a child in the bassinet when ascending or descending stairs or escalators, or when traveling on other forms of transport.

**NEVER** carry more than one child at a time in the bassinet. **USE** original Nuna parts and accessories only.

**USE ONLY** replacement parts supplied or approved by Nuna.

Any load attached to the handle or canopy affects the stability of the bassinet.

**DO NOT USE THIS BASSINET ONCE THE CHILD CAN SIT UP UNAIDED.**

**DO NOT USE FOR UNSUPERVISED SLEEPING.**

Never place product near a window where cords from blinds or drapes can strangle child.

Child can become entrapped and die when improvised netting or covers are placed on top of bassinet. Never add such items to confine child in bassinet.

**DO NOT** place any item on the canopy of this product.

To avoid any danger of suffocation, remove all plastic covers before using this product and destroy or keep away from babies and children!

**DO NOT** make any changes or modifications to this product, that is not specified in this manual.

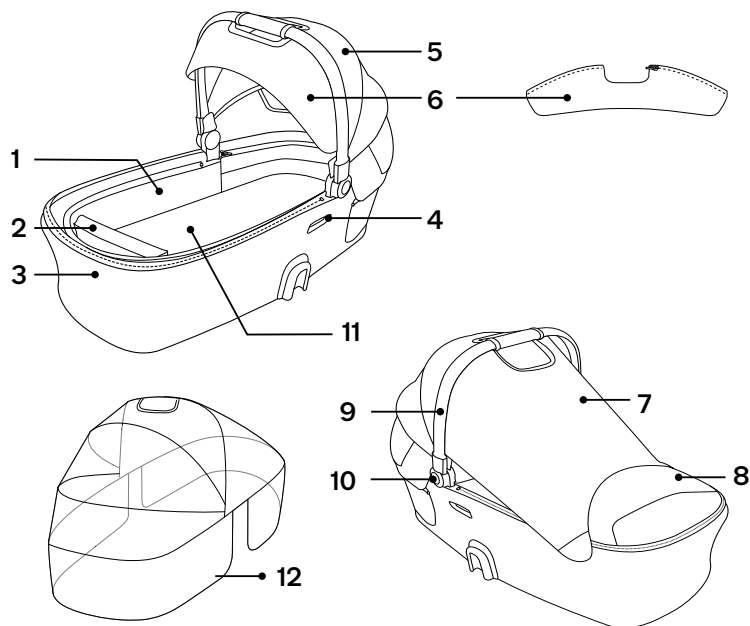
**NEVER** use this bassinet as a means to transport an infant in a motor vehicle.

Do not use the bassinet if it is damaged or broken.

## Parts List

Make sure all parts are available before assembly. If any part is missing, please contact local retailer. No tools are required for assembly.

- |  |                                      |
|--|--------------------------------------|
| 1 Bassinet Lining                          | 7 Dream Drape™                       |
| 2 Accessory Bag<br>(maximum load = 1.3 kg) | 8 Bassinet Cover<br>(style may vary) |
| 3 Bassinet                                 | 9 Handle                             |
| 4 Bassinet Release Button                  | 10 Handle Adjustment<br>Button       |
| 5 Canopy                                   | 11 Mattress Pad                      |
| 6 Canopy Visor                             | 12 Rain Cover                        |

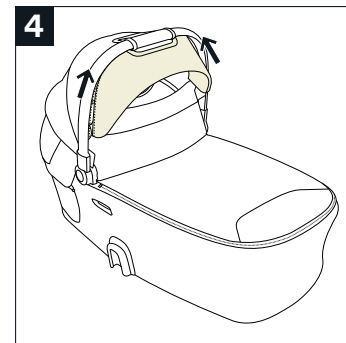
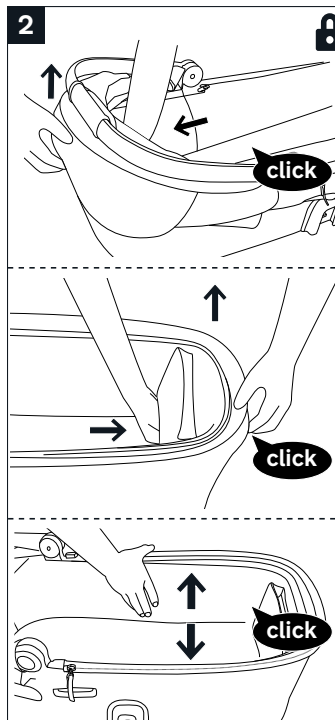
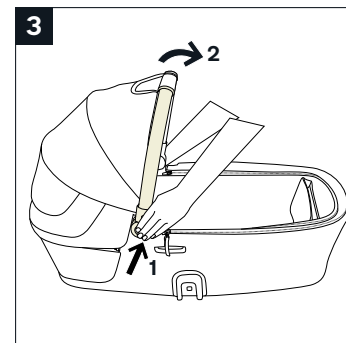
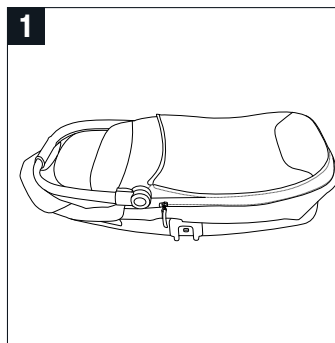


# Product Set Up

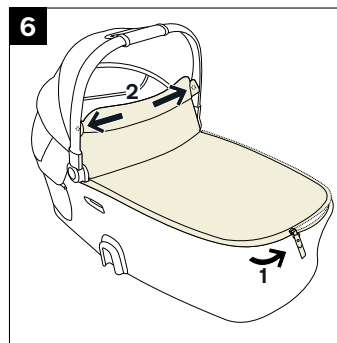
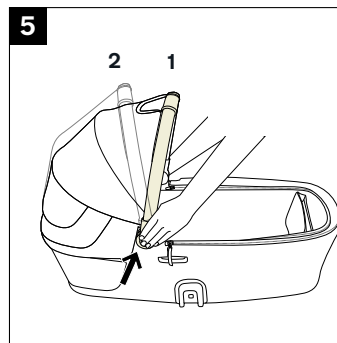
- 1 - Take the bassinet out.
- 2 - A “click” sound means the support mount is attached completely.
- 3 - Pull up the canopy as illustrated while pressing the buttons on both sides.
- 4 - To attach the canopy visor, zip it to the underside of the canopy on both sides of handle.

Visor flips in or out for added sun protection.

Unzip visor to remove.



- 5** - Check to make sure the handle is secure before placing the child in the bassinet.
- ! Make sure that the handle is in the correct position **(5)-1** of use before carrying or lifting.
- ! Mattress cover can easily be removed to wash.
- 6** - Attach the cover to the bassinet with zipper **(1)**, then attach snap buttons to the both sides of the handle **(2)**.



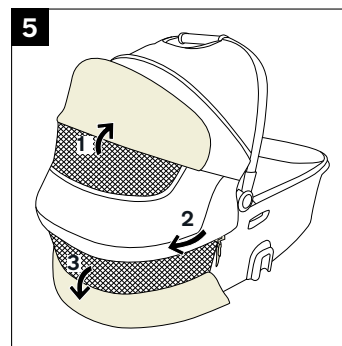
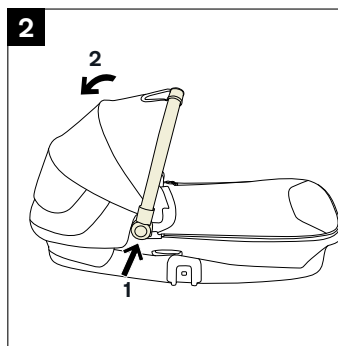
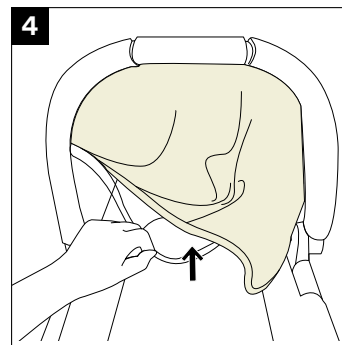
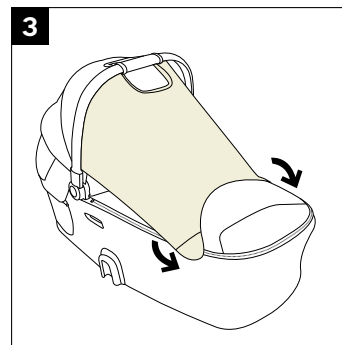
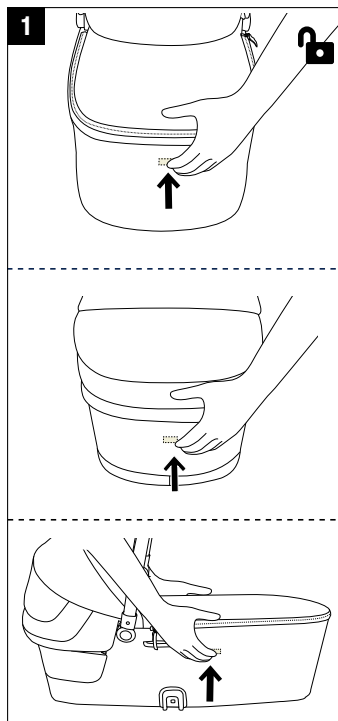


- 1 - To fold the bassinet, release the support mounts.
- 2 - Fold the canopy while pressing the handle adjustment button.

## Product Use

### Canopy

- 3 - To use the dream drape™, secure it to the two sides of bassinet with magnets.
- 4 - Store the dream drape™ under the canopy when not in use.
- 5 - Fold the rear panel of the canopy up, and the rear panel of the bassinet down for more ventilation.



## Bassinet Attachment on Stroller Frame

The bassinet can be used with DEMI series strollers.

- 1 - To attach bassinet to the stroller frame, align the sides of the bassinet with the seat mounts.

Place the bassinet directly down until it clicks into place.

A “click” sound means the bassinet is attached completely.

- 2 - The bassinet can be installed rear or forward facing on the top mount. When installing bassinet in lower mount, close the canopy.

- 3 - **DO NOT** use the bassinet rear facing on the lower mount.

### Bassinet Removal

- 4 - To remove bassinet, press the bassinet release buttons (1) and lift up (2).

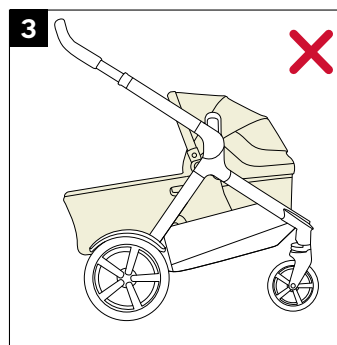
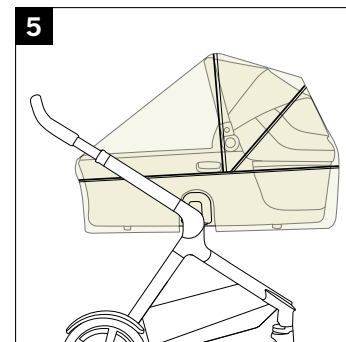
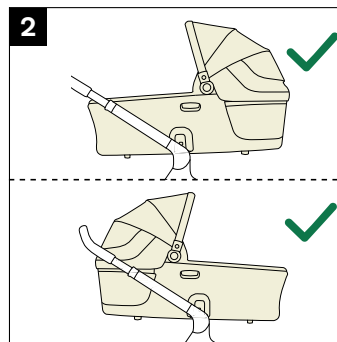
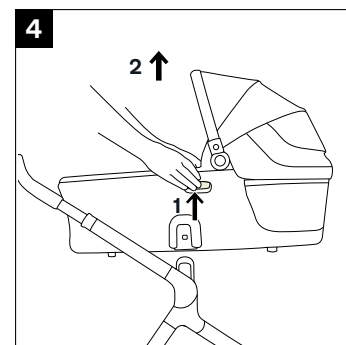
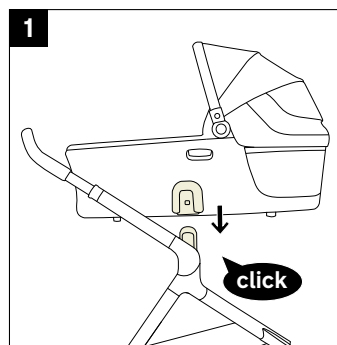
! Remove bassinet before folding stroller.

### Rain Cover

- 5 - To use the rain cover, place it over the bassinet.

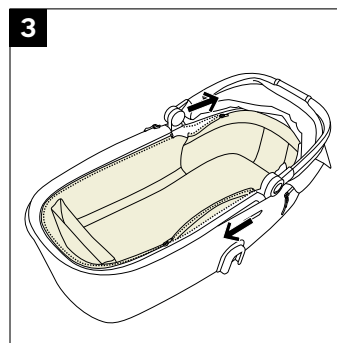
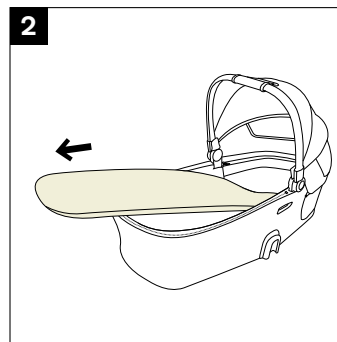
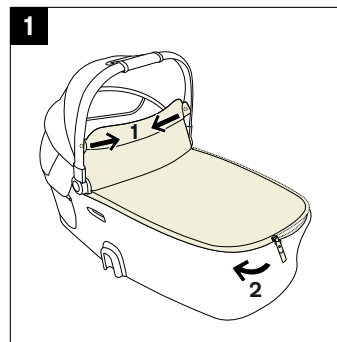
! **ALWAYS** check ventilation when the rain cover is on the product.

! **ALWAYS** check that the rain cover has been cleaned and dried before folding.



## Soft Goods Removal

- 1** - Detach the snap buttons and unzip the bassinet cover to remove it.
- 2** - Take out the mattress pad and remove the cover.
- 3** - To remove the bassinet lining. Unzip the zippers on the bassinet.



# Cleaning and Maintenance

Clean the frame, plastic parts, and fabric with a damp cloth, but do not use abrasives or bleach. Do not use silicon lubricants as they will attract dirt and grime. Do not store the bassinet in a damp place.

To ensure long-lasting use, wipe this product off with a soft, absorbent cloth after using it in rainy weather and before storing away.

Refer to the care labels attached to the soft goods for washing and drying instructions.

It is normal for fabric to color from sunlight and to show wear and tear after a long period of use, even when used normally.

For reasons of safety, only use original Nuna parts.

Check regularly if everything functions properly. If any parts are torn, broken, or missing, stop using this product.