

*Designed*  
**around your life**



**IMPORTANT!**  
**KEEP THESE**  
**INSTRUCTIONS FOR**  
**FUTURE REFERENCE:**  
*READ CAREFULLY*

## Contents

|                                 |    |
|---------------------------------|----|
| <b>Product Information</b>      | 4  |
| Warranty                        |    |
| Contact                         |    |
| <b>Child Usage Requirements</b> | 5  |
| <b>Warnings</b>                 | 6  |
| <b>Parts List</b>               | 10 |
| <b>Product Set Up</b>           | 12 |
| <b>Product Use</b>              | 16 |
| <b>Accessories</b>              | 24 |
| <b>Cleaning and Maintenance</b> | 28 |

## Product Information

**Model Number:** \_\_\_\_\_

**Manufactured Date:** \_\_\_\_\_

The model number and the manufactured in date are located on a label on the stroller frame.

### Warranty

Our goods come with guarantees that cannot be excluded under the Australian Consumer Law. You are entitled to a replacement or refund for a major failure and compensation for any other reasonably foreseeable loss or damage. You are also entitled to have the goods repaired or replaced if the goods fail to be of acceptable quality and the failure does not amount to a major failure.

We have purposely designed our high-quality products so that they can grow with both your child and your family. Because we stand by our product, our gear is covered by a custom warranty per product, starting from the day it was purchased. Please have the proof of purchase, model number and manufactured in date available when you contact us.

**For warranty information please visit:**  
[www.nunababy.com](http://www.nunababy.com)

## Contact

For replacement parts, service, or additional warranty questions, please contact our customer service department.

**Distributed by Nuna Baby Australia Pty Ltd**

ACN: 642 240 140

Unit 1, 35 Lyn Parade Prestons, NSW Australia 2170

**For after-sales & warranty service, contact:**

1800 951 070

[customerservice@nunababy.com.au](mailto:customerservice@nunababy.com.au)

## Child Usage Requirements

This stroller is suitable for use with children who meet the following requirements:

**Weight:** up to 22.7 kg maximum each seat

When using the stroller frame with KLIK plus infant carrier, refer to the child usage requirements listed in the infant carrier instruction manual.

**Weight:** up to 13 kg maximum

## **WARNING**

FOLLOW THE MANUFACTURER'S INSTRUCTIONS. PUT ON ALL THE BRAKES WHENEVER YOU PARK THE STROLLER.

DO NOT LEAVE CHILDREN UNATTENDED. ALWAYS KEEP CHILD IN VIEW WHILE IN STROLLER.

SECURE THE CHILD IN THE HARNESS AT ALL TIMES.

USE THIS HARNESS AT ALL TIMES.

DO NOT CARRY EXTRA CHILDREN OR BAGS ON THIS STROLLER.

**MAKE SURE CHILDREN ARE CLEAR OF ANY MOVING PARTS IF YOU ADJUST THE STROLLER. OTHERWISE THEY MAY BE INJURED.**

TO AVOID SERIOUS INJURY FROM FALLING OR SLIDING OUT, ALWAYS USE SEAT BELT.

USE THIS TETHER STRAP TO STOP THE STROLLER ROLLING AWAY.

Ensure that all the locking devices are engaged before use.

Do not let your child play with this product.

Never leave the harness buckled when not fitted to a child in the stroller because the harness can form loops which may pose a strangulation hazard.

The use of accessories not approved by the vehicle manufacturer is unsafe.

Adult assembly required.

Use of this stroller with a child weighing more than 22.7 kg each seat will cause excessive wear, and stress on the stroller, and could create an unstable condition. Use the stroller with only one child in each seat at any given time.

To prevent a hazardous, unstable condition, do not place more than 10 kg in the storage basket before use.

Overloading, folding incorrectly, or using component parts from other manufacturers may cause the stroller to be damaged, broken or unsafe. Please read the instruction manual carefully.

Please read all the instructions in the manual before using the product. Please save instruction manual for future use. Failure to follow these warnings and instructions may result in serious injury or death.

Safety belts and restraint system must be used correctly.

Child may slip into leg openings and be strangled if the harness is not used.

Never use stroller on stairs or escalators.

The stroller is not to be used near an open fire or exposed flame.

Never allow your child to stand on the stroller or sit in the stroller with head toward front of stroller.

Never place the stroller on roads or dangerous area.

The vehicle is designed for use on flat or gently sloping surfaces and may be unstable on higher sloping and uneven surfaces, resulting in the possibility of the vehicle tipping over.

Do make sure all parts are assembled and fastened properly before using the stroller.

To avoid strangulation, do not place items with a string around your child's neck, suspend strings from this product, or attach strings to toys.

To prevent tipping, do not put anything on the handle. Always lift the child in and out of the stroller.

Do not lift stroller while child is in stroller.

Do not use storage basket as a child carrier.

To prevent tipping, never let child climb the stroller.

To avoid finger entrapment or injury to the body, use care when folding and unfolding the stroller.

Be sure the stroller is fully open or folded before allowing child near the stroller.

Check that the infant child restraint attachment device is correctly engaged before use.

To avoid strangulation, do make sure your child is clear from the canopy.

Discontinue using your stroller if it is damaged or broken.

Stroller to be used only at walking speed. This product is not intended for use while jogging.

To avoid suffocation, remove plastic bag and packaging materials before using this product. The plastic bag and packaging materials should then be kept away from babies and children.

This product is not suitable for running or skating.

This stroller is suitable from birth. Only use the most reclined position for newborns.

The parking device must be engaged when placing and removing children.

Please ensure that the storage latch has been properly locked, before lifting or moving the vehicle.

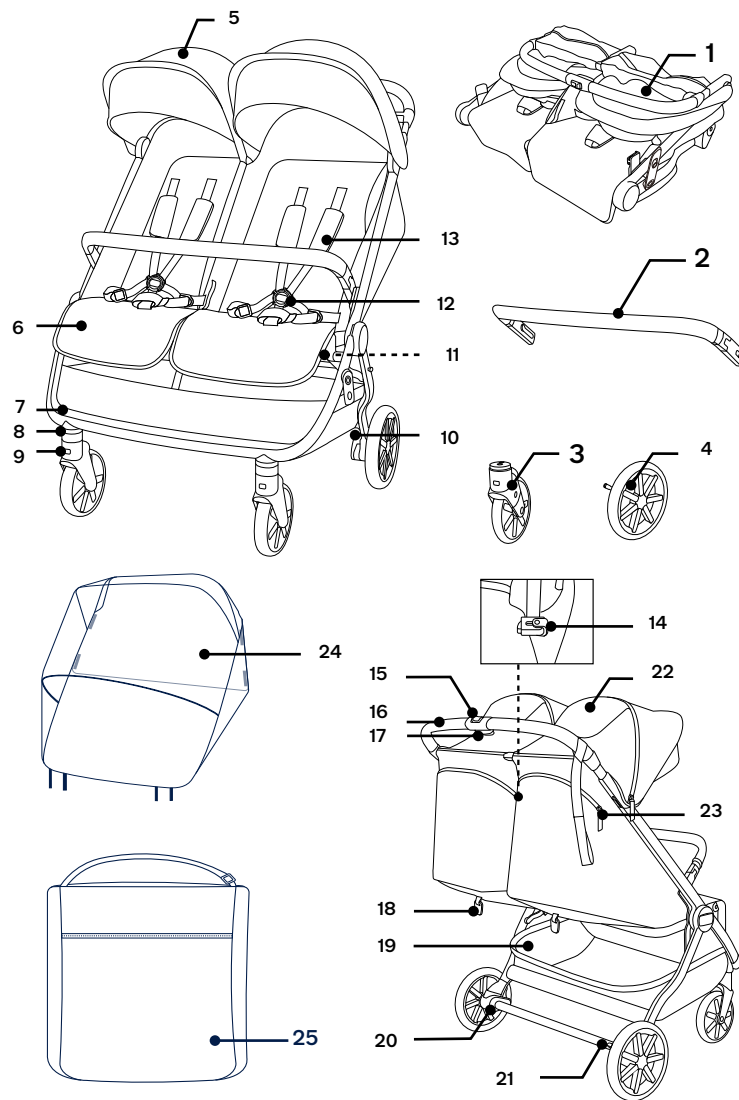
The vehicle is not to be used as an unsupervised sleeping environment.

# Parts List

Make sure all parts are available before assembly.  
If any part is missing, please contact local retailer. No tools are required for assembly.

**! CHOKING HAZARD:** Remove and immediately discard protective end caps from each wheel and wheel hub axle.

- |                                   |                              |
|-----------------------------------|------------------------------|
| 1 Stroller Frame                  | 14 Infant Carrier Lock       |
| 2 Armbar                          | 15 Secondary Lock            |
| 3 Front Wheel (x2)                | 16 Handle                    |
| 4 Rear Wheel (x2)                 | 17 One-Hand-Fold Button      |
| 5 Canopy                          | 18 Recline Adjustment Handle |
| 6 Calf Support                    | 19 Storage Basket            |
| 7 Footrest                        | 20 Rear Wheel Release Button |
| 8 Front Swivel Lock               | 21 Rear Brake Lever          |
| 9 Front Wheel Release Button      | 22 Canopy Window             |
| 10 Storage Latch                  | 23 Tether Strap              |
| 11 Calf Support Adjustment Button | 24 Rain Cover                |
| 12 Buckle                         | 25 Carry bag                 |
| 13 Shoulder Harness Pad           |                              |



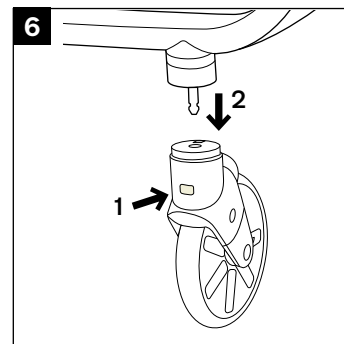
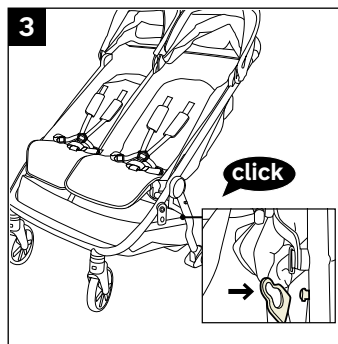
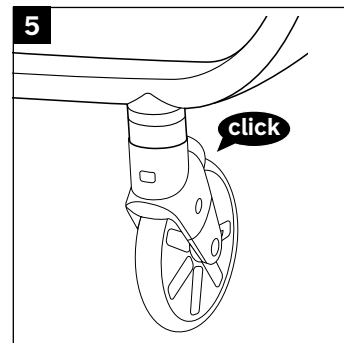
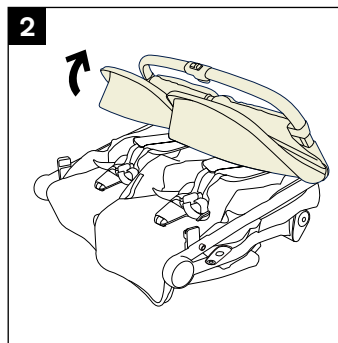
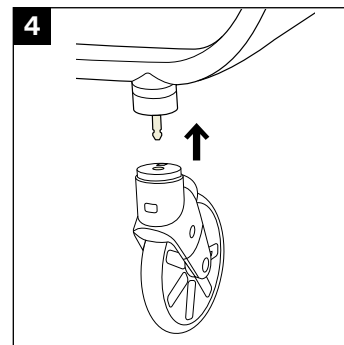
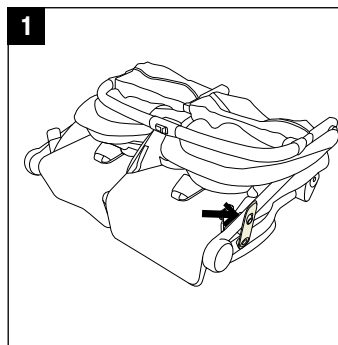
# Product Set Up

## Open Stroller

- 1 - Take the stroller frame out. And then open the storage latch.
  - 2 - Rotate the stroller handle up and open the stroller frame.
  - 3 - A “click” sound means the stroller frame is open completely. Hook the storage basket on the rear legs on both sides
- ! Check that the stroller is completely latched open before continuing.

## Front Wheels

- 4 - Insert the front wheel into the front leg.
  - 5 - A “click” sound means the wheel is assembled completely.
- ! Check that the wheels are securely attached by pulling on them.
- 6 - To remove the front wheel, press the release button (1) and then detach the front wheel from the front leg (2).

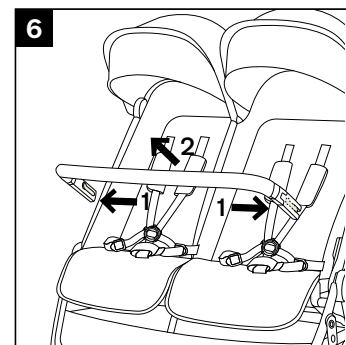
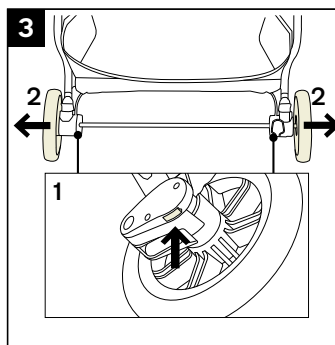
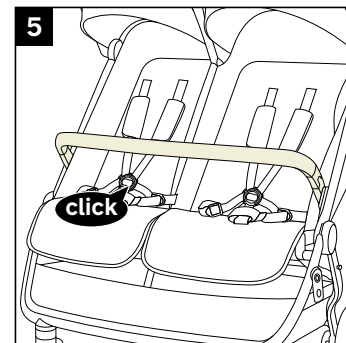
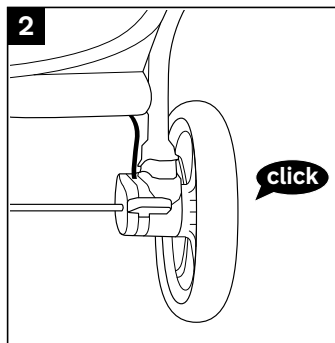
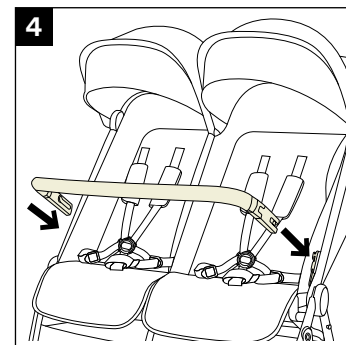
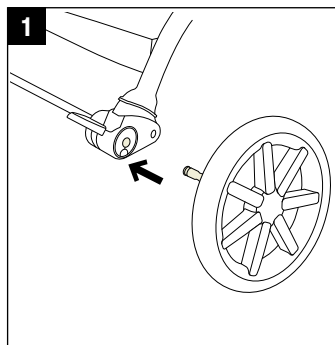


## Rear Wheels

- 1 - Insert the rear wheel into the rear leg.
  - 2 - A “click” sound means the rear wheel is assembled completely.
- ! Check that the wheels are securely attached by pulling on them.
- 3 - To remove the rear wheel, press the release button (1) and detach the rear wheel from the rear leg (2).

## Arm Bar

- ! It is always recommended that the armbar be used, but it is not a restraint device. Always secure the child with the harness.
- 4 - Align the armbar ends with the armbar mounts, and insert until it clicks into place.
  - 5 - A “click” sound means the armbar is assembled completely.
- To rotate the armbar, press the armbar release button on one side and rotate the armbar from the other side.
- 6 - To remove the armbar, press the armbar release buttons (1), and pull the armbar out (2).





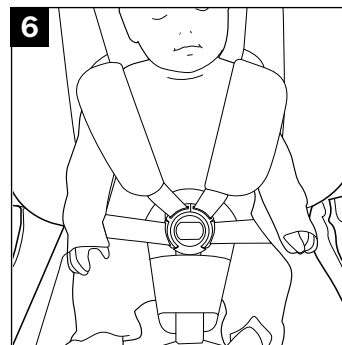
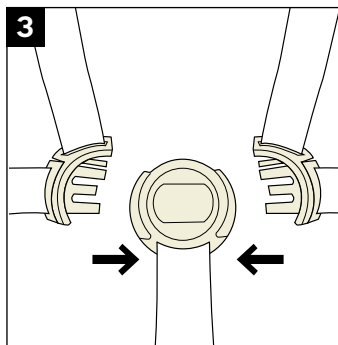
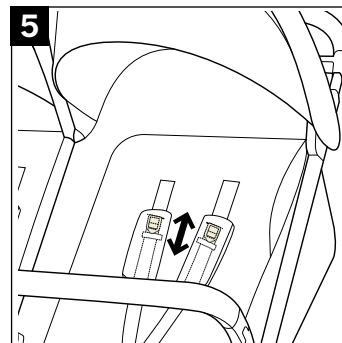
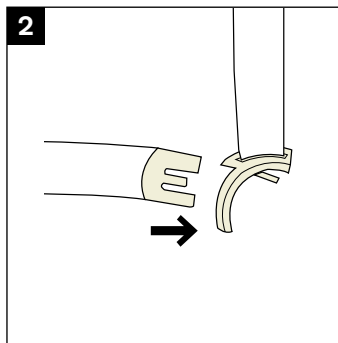
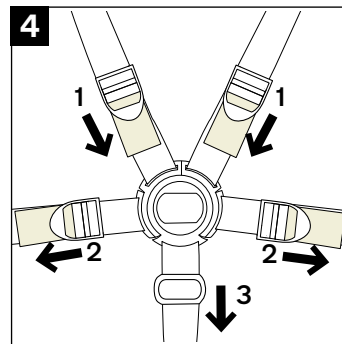
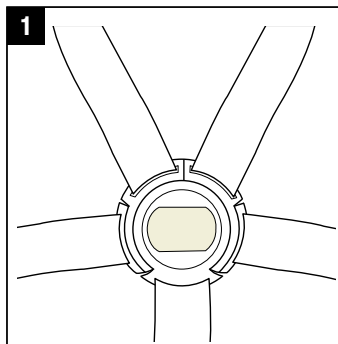
# Product Use

## Securing Your Child

- ! **WARNING:** Use this harness at all times.
  - ! The parking brake **MUST** be engaged when the stroller is stopped and when placing and removing child.
  - ! To avoid serious injury from falling or sliding out, always secure your child with the harness. Make sure the harness is adjusted properly and your child is snugly secured. The space between the child and the shoulder harness should be about the thickness of one finger. **DO NOT** cross the shoulder belts. This will cause pressure on your child's neck.
- 1 - Push the center button on the buckle to release the buckle latch, remove the clips and place your child in the stroller.
  - 2 - Connect the shoulder buckle and hip buckle.
  - 3 - Secure the shoulder buckle and hip buckle to the buckle latch and repeat on the opposite side.
  - 4 - Fit the harness snugly to your child by pulling the adjustment straps to tighten (1). Then pull the waist adjustment straps out (2). The buckle latch height can also be adjusted to sit above the thighs (3).

## Shoulder Harness Position

- 5 - The upper shoulder harness buckles can be moved up and down for added adjustment.
- 6 - Check the shoulder harness height is close to the child's shoulders. Then check the harness straps at the shoulders, waist and crotch are a snug fit. Adjust where necessary.



## Canopy

- 1 - Open the zipper on the canopy for extra shade.
- 2 - For added ventilation, flip the canopy window cover up.
- 3 - For added air flow, unzip the back zipper to expose the mesh.

## Recline

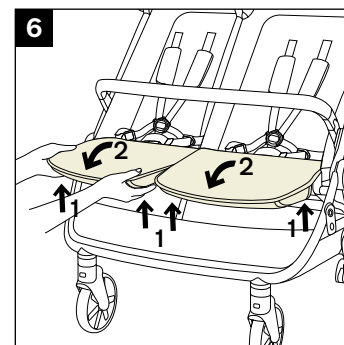
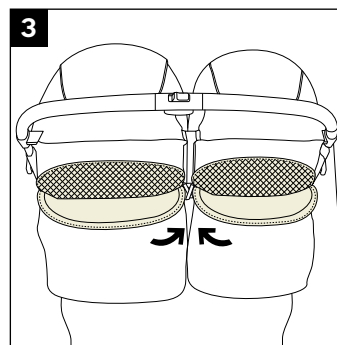
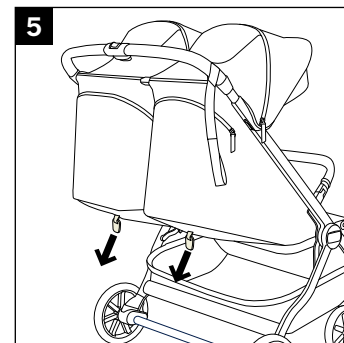
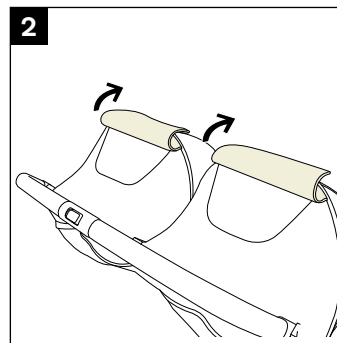
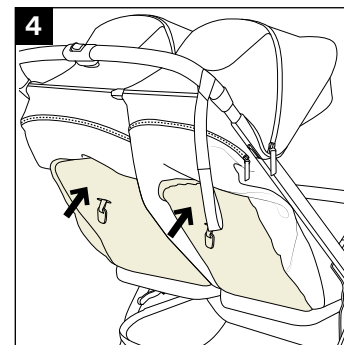
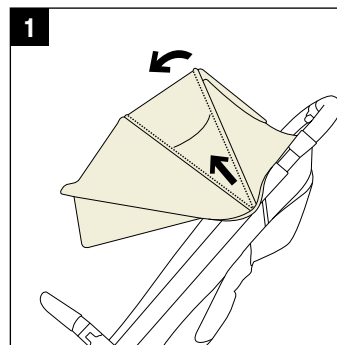
- 4 - To raise the recline, push the backrest up.
- 5 - To recline the backrest, pull the recline adjustment handle down.
  - ! For newborn babies use the most reclined backrest position.
  - ! The upright positions are not recommended for a child under 6 months of age. Use only when the infant is able to sit unassisted.

## Calf Support

The calf support has 2 positions.

- 6 - To raise the calf support, lift up.

To lower the calf support, press the adjustment buttons on the underside of the calf support (1) and push down (2). When the child's leg is able to rest on the footrest, lower the calf support.



## Use Tether Strap

! **WARNING:** Use this tether strap to stop the stroller rolling away.

- 1 - Use the tether strap to prevent the stroller inadvertently rolling away. Check that when your hand is through the loop, it allows you to easily control the stroller.

## Brake

- 2 - To lock the rear wheels, step down on the brake lever.

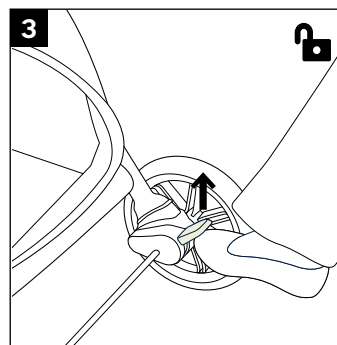
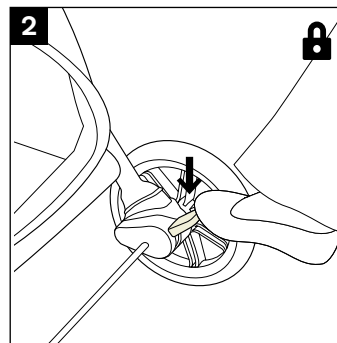
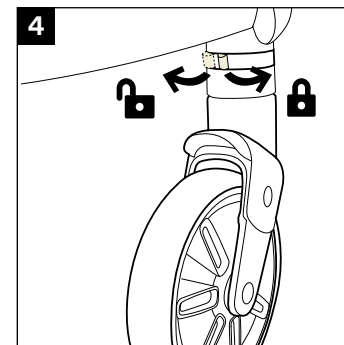
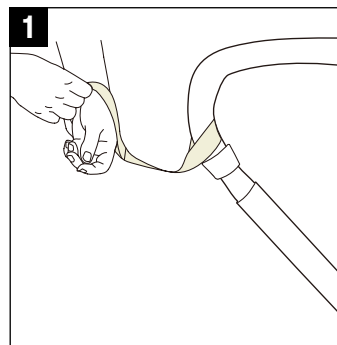
- 3 - To unlock the rear wheels, lift up on the brake lever.

! Always apply the brake when the stroller is stopped. Push the stroller slightly to ensure the brake is engaged.

## Front Swivel Locks

! It is recommended to use the front swivel locks on uneven surfaces.

- 4 - Lock or unlock the front wheels by turning the swivel lock as shown.



## Fold

! To avoid finger entrapment or injury to the body use care when folding and unfolding the stroller.

! Ensure that the front swivel locks are unlocked before folding the stroller.

1 - Fold the canopy.

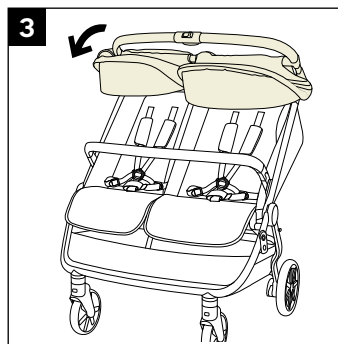
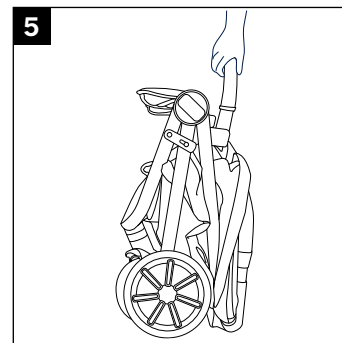
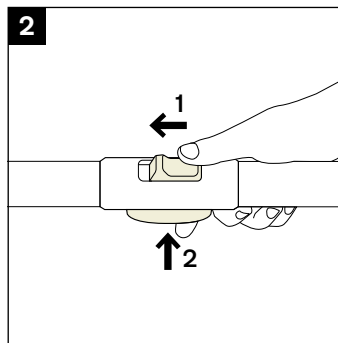
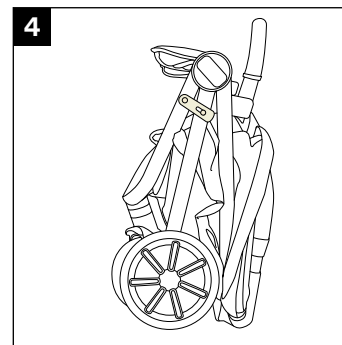
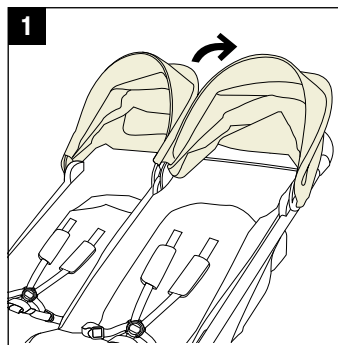
2 - Slide the lock against the handle (1) and then squeeze the folding button (2).

3 - While squeezing the folding button, fold the handle down.

4 - The stroller will fold and stand on its own. then rotate the storage latch.

5 - You can carry the stroller by lifting the armbar.

! Ensure the storage latch is engaged when lifting or carrying the stroller.



# Accessories

Not all accessories are included on some models.

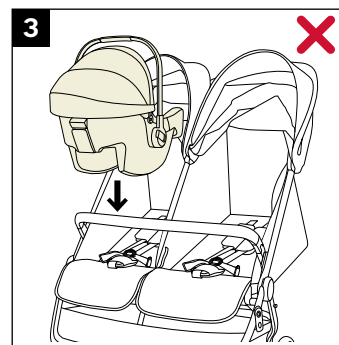
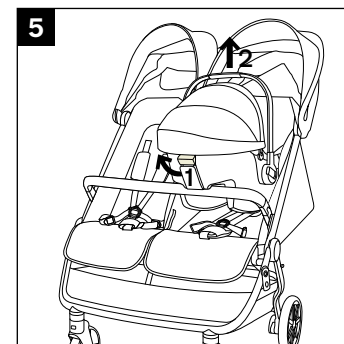
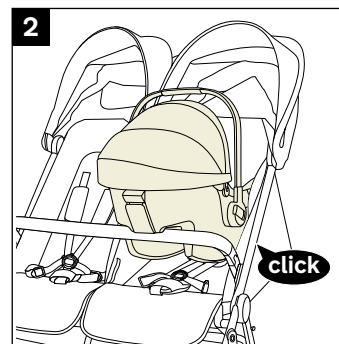
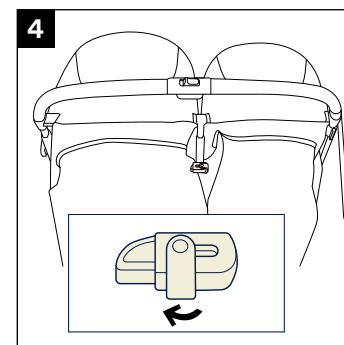
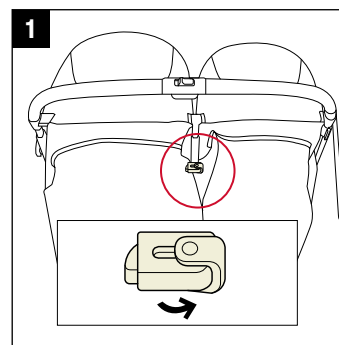
- ! Do not use any accessories other than those approved for use with this stroller by Nuna Baby.

## KLIK plus infant carrier

For KLIK plus infant carrier assembly and usage, please refer to the infant carrier instruction manual.

Before using with infant carrier, Adjust the backrest to the lowest position and fold the canopy.

- 1 - Release the infant carrier lock.
- 2 - Place the infant carrier on the stroller so it sits over the armbar.
- 3 - Infant carrier can only be installed on wide seat.
- 4 - Close the infant carrier lock to secure the infant carrier on the stroller.
  - ! Pull up on the infant carrier to check that it is fully locked to the stroller.
  - ! Remove the infant carrier before folding the stroller.
- 5 - To remove the infant carrier, release the infant carrier lock, squeeze the release handle (1), and lift the infant carrier up (2).
  - ! Secure the child in the harness at all times.
  - ! This vehicle is not to be used as an unsupervised sleeping environment.



## TRVL dubl Rain Cover

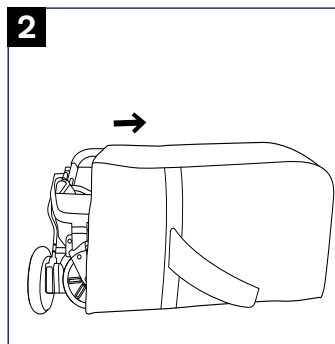
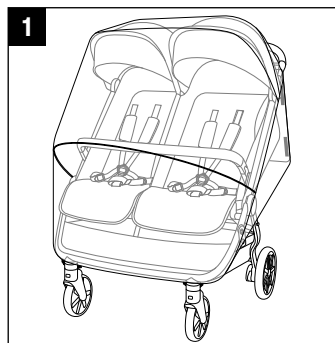
Check that the canopy is completely open before attaching the rain cover.

**1** - To assemble the rain cover, place it over the stroller.

- ! Always check ventilation, especially in hot weather when the rain cover is on the product.
- ! Always check that the rain cover has been cleaned and dried before folding.
- ! DO NOT fold the stroller after assembling the rain cover.
- ! DO NOT place your child into the stroller assembled with rain cover during hot weather.

## Carry Bag

**2** - Put the folded stroller into the carry bag and close the bag using the zipper.



# Cleaning and Maintenance

Clean the frame, plastic parts, and fabric with a damp cloth, but do not use abrasives or bleach. Do not use silicon lubricants as they will attract dirt and grime. Do not store your stroller in a damp place.

Clean the stroller wheels regularly with water and remove any dirt.

To ensure long-lasting use, wipe the stroller off with a soft, absorbent cloth after using it in rainy weather.

Refer to the care label attached to the soft goods for washing and drying instructions.

It is normal for fabric to color from sunlight and to show wear and tear after a long period of use, even when used normally.

For reasons of safety, only use original Nuna parts.

Check regularly if everything functions properly. If any parts are torn, broken, or missing, stop using this product.